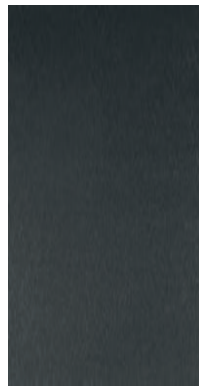
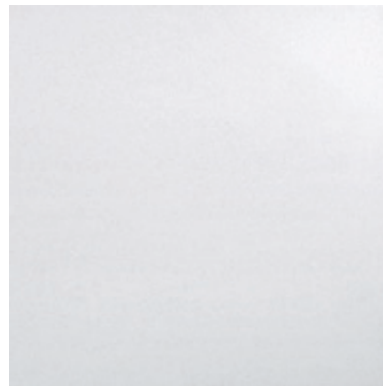


**BLACK
RECTIFIED
24" X 24"
32" X 32"***



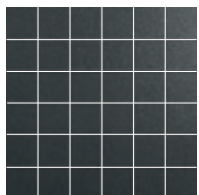
**BLACK
RECTIFIED
12" X 24"
16" X 32"***



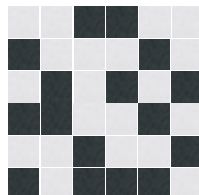
**SUPER WHITE
RECTIFIED
24" X 24"
32" X 32"***



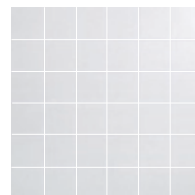
**SUPER WHITE
RECTIFIED
12" X 24"
16" X 32"***



**BLACK
MOSAIC
12" X 12"**



**MIX
MOSAIC
12" X 12"**



**SUPER WHITE
MOSAIC
12" X 12"**

*SPECIAL ORDER. ALLOW 8-10 WEEKS. FULL BOX ORDERS ONLY. NO RETURNS.



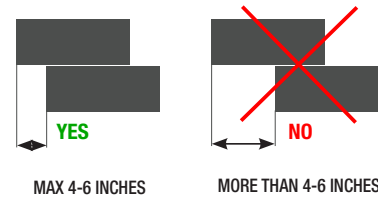
PACKAGING & PRICING INFORMATION

| SIZE | TYPE | COLOUR | PIECES PER BOX | BOXES PER SKID | PCS. PER S/F |
|------------|-------------------------------|--------|----------------|----------------|--------------|
| 12" x 24" | RECTIFIED | ALL | 6 | 48 | 0.516 |
| 24" x 24" | RECTIFIED | ALL | 3 | 48 | 0.258 |
| 12" x 12" | MOSAIC (2"x2" SQUARES) | ALL | 5 | 90 | 1.032 |
| 12" x 12" | MIX MOSAIC (2"x2" SQUARES) | ALL | 5 | 90 | 1.032 |
| 16" x 32"* | RECTIFIED | ALL | 3 | 30 | 0.290 |
| 32" x 32"* | RECTIFIED | ALL | 2 | 40 | 0.145 |

*SPECIAL ORDER. ALLOW 8-10 WEEKS. FULL BOX ORDERS ONLY. NO RETURNS.

| TECHNICAL INFORMATION | |
|---------------------------------|---------------------|
| PEI PEI (WEAR RESISTANCE) | 3 (BLACK) 5 (WHITE) |
| VARIATION | UNIFORM |
| FROST RESISTANCE | YES |
| MOHS (SCRATCH RESISTANCE) | 7 |
| THICKNESS | 9.6mm |
| WATER ABSORPTION | < 0.5% |
| SLIP RESISTANCE | CLASS 2 |
| PORCELAIN | YES |
| FULL BODY/COLOUR BODY/THRU BODY | YES |
| FLOOR | YES |
| WALL | YES |
| COUNTRY OF ORIGIN | SPAIN |

When rectangular products are laid in "Running Bond" patterns, the longest side should be staggered in relation to the length of the piece next to it by no more than 4-6 inches.



IMPORTANT

SPECIFICATIONS ARE FOR FLOORTILE ONLY UNLESS OTHERWISE NOTED.

Product specifications have been supplied by the manufacturer and are subject to change by the manufacturer without any notice to you or MidgleyWest®. We make no representations or warranties as to the specifications of any product. For more information regarding the specifications listed above please consult the back of this price book.