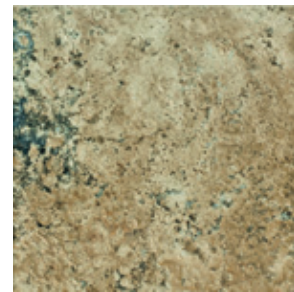


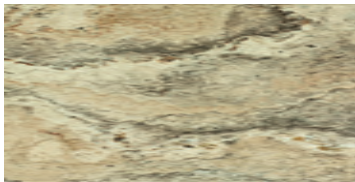
EARTH
9" X 9"
18" X 18"



WIND
9" X 9"
18" X 18"



FIRE
9" X 9"
18" X 18"



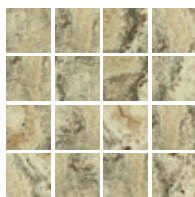
EARTH
9" X 18"



WIND
9" X 18"



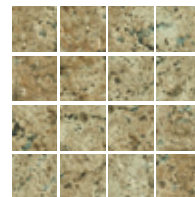
FIRE
9" X 18"



EARTH
MOSAIC
12" X 12"



WIND
MOSAIC
12" X 12"



FIRE
MOSAIC
12" X 12"



PACKAGING & PRICING INFORMATION

SIZE	TYPE	COLOUR	PIECES PER BOX	BOXES PER SKID	PCS. PER S/F
18" x 18"	FIELD	ALL	7	32	.4485
9" x 18"	FIELD	ALL	14	48	.8908
9" x 9"	FIELD	ALL	28	48	1.7577
12" x 12"	MOSAIC (3"x3" SQUARES)	ALL	4	81	1.0323

TECHNICAL INFORMATION		
PEI	PEI (WEAR RESISTANCE)	5
	VARIATION	EXTENSIVE
	FROST RESISTANCE	YES
	MOHS (SCRATCH RESISTANCE)	7
	THICKNESS	9mm
	WATER ABSORPTION	< 0.5%
	SLIP RESISTANCE	DRY: 0.75 - WET: 0.60
	PORCELAIN	YES
fb cb tb	FULL BODY/COLOUR BODY/THRU BODY	NO
	FLOOR	YES
	WALL	YES
	COUNTRY OF ORIGIN	U.S.A.

When rectangular products are laid in "Running Bond" patterns, the longest side should be staggered in relation to the length of the piece next to it by no more than 4-6 inches.

YES **NO**

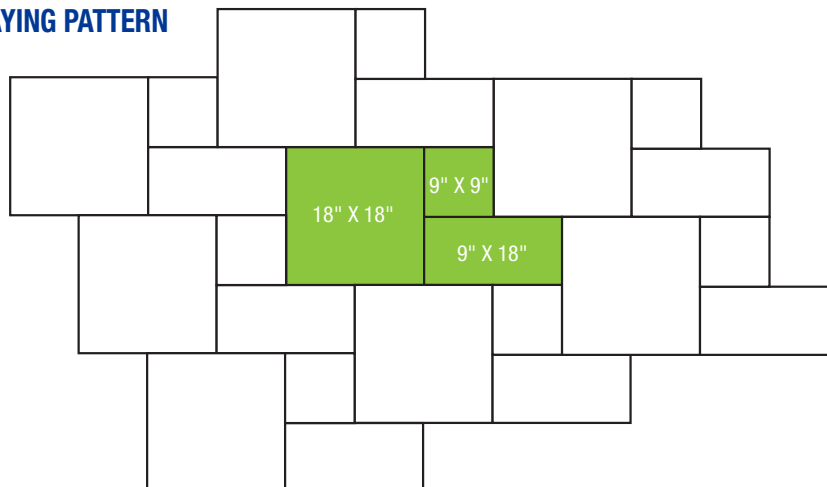
MAX 4-6 INCHES MORE THAN 4-6 INCHES

IMPORTANT

SPECIFICATIONS ARE FOR FLOOR TILE ONLY UNLESS OTHERWISE NOTED.

Product specifications have been supplied by the manufacturer and are subject to change by the manufacturer without any notice to you or MidgleyWest®. We make no representations or warranties as to the specifications of any product. For more information regarding the specifications listed above please consult the back of this price book.

SUGGESTED LAYING PATTERN



18" X 18" = 57%
9" X 18" = 28%
9" X 9" = 14%